



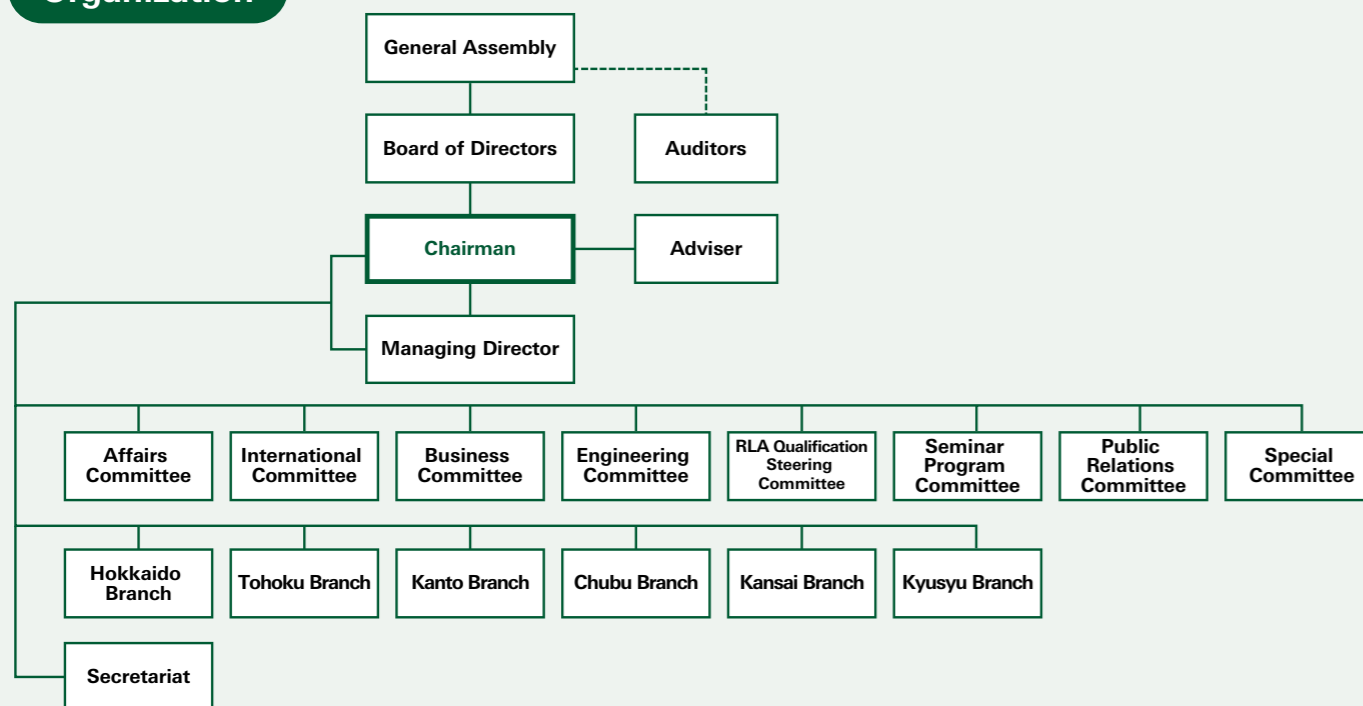
# The Outline of Consultants of Landscape Architecture in Japan (CLA)

## Activities

CLA firmly intends to contribute to the development of landscape architecture, create and develop affluent society with excellent full-of-green environment, and promote the permeation of our professional services in versatile activities listed below.

- Study and research of the development of landscape architecture and improvement of professional skills
- Proposals to related ministries on landscape architecture
- Efforts for cooperation and exchange of domestic and international organizations of landscape architecture
- Consulting variety projects of landscape architecture
- Efforts for permeation of our professional services
- Holding lecture, seminar, training and study tours
- Certify and register the qualification of landscape architecture
- Collect and offer the related data of our professional services
- Efforts of any other necessary duties

## Organization



## Publications

- Guideline of Reward Estimate for Landscape Standard Business
- Investigation and Planning for Reassurance and Safety Measure of City Parks  
- Basic plan for extending service life of park facilities and renewal plan of city parks-  
Standard Business Specification and Guideline of Reward Estimate
- CLA journal
- 55 Examples of Landscapes ~ Useful for Beautiful Landscape and City Planning~



Consultants of Landscape Architecture in Japan



Consultants of Landscape Architecture in Japan



# Create and Develop Affluent Society with Full-of-Green Environment

All nations on the earth are expected to make consecutive and strenuous efforts to create affluent homeland with energetic society. For the purpose to reach this goal, it is essential to prepare comfortable and full-of-green environment for all society where we live.

We, Consultants of Landscape Architecture, aim at creating cities beautiful with full of green, and regions where people can co-exist with well- reserved nature. Also, we surely will hand this environmentally excellent homeland down to following generations.

"Consultants of Landscape Architecture in Japan", as an only one qualified functioning corporation in this field in Japan, we set our goal at contributing to create and develop affluent society with excellent full-of-green environment.

## The Tasks of Landscape Consultants

The tasks and target of Landscape Consultants is to take part in total and versatile activities to improve the quality of life in our society through our contributions in following manner.

- Design of national scale infrastructures, and also of various urban environment.
- Investigation and preservation planning of natural resources such as forest, wasteland, rivers and seafont.
- Design of our environment to make it possible for human being to coexist with all other living creatures.

## Land Use Planning

## Regeneration of Natural Resources

## Landscape Planning

## Parks & Greenbelts Planning

## Road Projects

## River, Erosion & Sediment Control, Waterfront Projects

## Sightseeing & Resort Projects

## Exhibition Projects

## Projects of City & Community Planning

## Conservation of Traditional Engineering

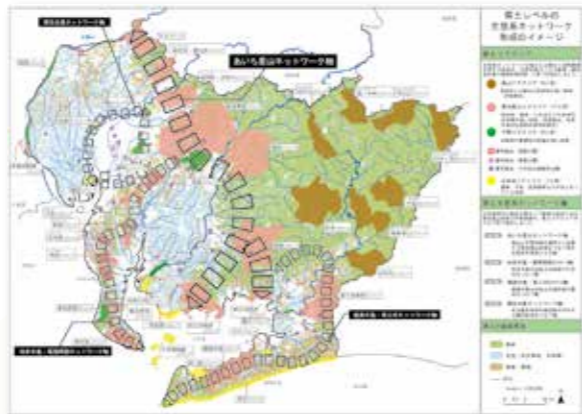
## Landscape Planning



- Surveys & plans of landscape project
- Roadside planning

## Land Use Planning

- Basic greenbelt plans
- Ecological networks
- Improvement projects for rural districts



## River, Erosion & Sediment Control, Waterfront Projects



- Planning & design of ecological river
- Planning & design of riverside parks & the waterfront

## Road Projects

## Sightseeing & Resort Projects

- Planning & design of sports parks & theme parks
- Planning & design of golf courses & resorts



- Planning, design & management of city parks (National government parks, parks in cities, parks in residential district, greenway)
- Basic plan for extending service life of parks
- Renewal plan of city parks
- Planning of disaster prevention parks
- Planning, design & managing of mass facility areas in natural parks

## Parks & Greenbelts Planning



- Planning, design & improvement of traditional Japanese gardens

## Exhibition Projects

- World exposition
- Planning, design & produce of fair sites



## Projects of City & Community Planning

- Green roof design & commercial district regeneration
- Garden designing
- Planning & design of symbolic & open space
- Implementing residents-participating workshops
- Ecological network plan of new residential town & renewal of housing complex



- Survey of natural environment
- Basic environment plans
- Environmental assessment
- National parks management plans
- Ecological plans

## Regeneration of Natural Resources



## Conservation of Traditional Engineering